

# CUfocus

## A MESSAGE FROM OUR CEO



Richard Yeager - CEO

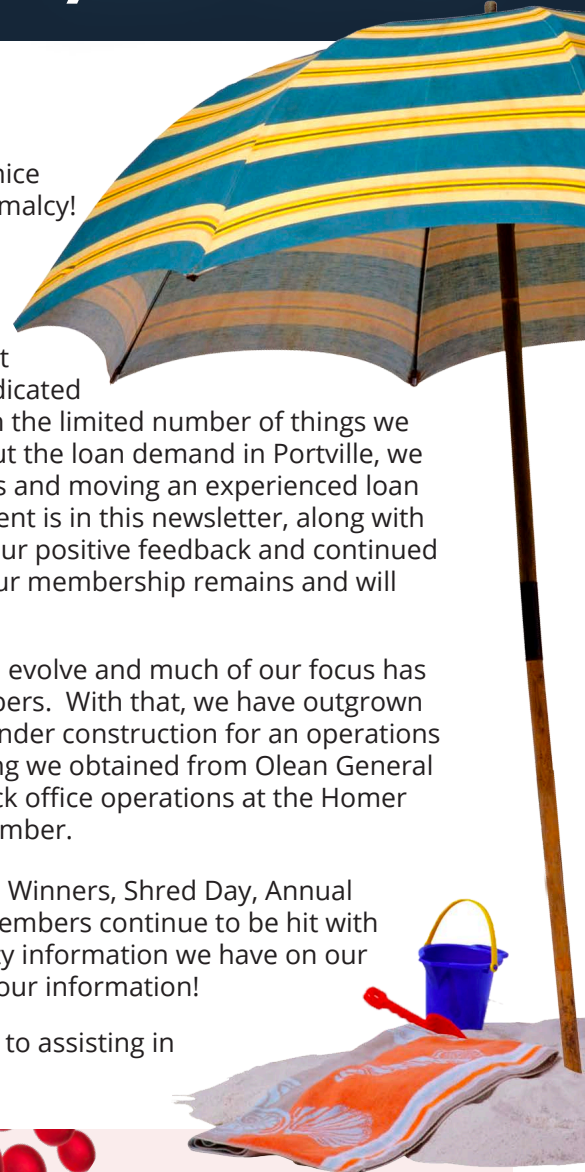
I think more than ever, we are enjoying the nice weather and a continuous trend back to normalcy!

2021 has already been an exciting year for our Credit Union with the recent Portville successful Branch Opening. I want to thank all our members for stopping by to check out the new branch. I also want to thank our dedicated staff for making it a great opening, even with the limited number of things we could do. As we continue to learn more about the loan demand in Portville, we will be making a change to our branch teams and moving an experienced loan officer to Portville. The exciting announcement is in this newsletter, along with information about all our branch leaders. Your positive feedback and continued support mean everything to us, as serving our membership remains and will continue to be our main focus!

Our Credit Union has continued to grow and evolve and much of our focus has been on the digital side of serving our members. With that, we have outgrown our current Wayne Street building and are under construction for an operations center on Homer Street in Olean, in a building we obtained from Olean General Hospital. We expect to have many of our back office operations at the Homer Street location beginning sometime in September.

Also within this Newsletter, you will find information regarding our Scholarship Winners, Shred Day, Annual Blood Drive, Movie nights, and Member Appreciation Days. Additionally, our members continue to be hit with many different types of prevalent scams. Please take time to review the security information we have on our website ([oleanareafcu.org](http://oleanareafcu.org)) and social media pages and remember to protect your information!

As always, we are grateful for the loyalty of our membership, and look forward to assisting in the achievement of your financial goals for many years to come!



**DATE:** Thursday, July 8th

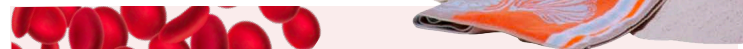
**TIME:** 11am - 2pm

**LOCATION:** Wayne Street Parking Lot

3 BOX LIMIT PER MEMBER



Social Distancing Encouraged



# ConnectLife

## BLOOD DRIVE

Give a patient in need the chance to celebrate new beginnings by donating blood with ConnectLife and Olean FCU at this year's blood drive!

**Olean's Wayne Street Parking Lot**

**Monday, August 23rd**

**1:30pm - 4:30pm**

## MILLER PROMOTED TO PORTVILLE BRANCH MANAGER



We are happy to announce the promotion of **Joshua Miller** to Portville Branch Manager. Josh is a graduate of SUNY Fredonia and began his career with Olean Area FCU in Member Service in March 2011. He quickly advanced to becoming an Indirect Lender and was promoted to his most recent position as Allegany Branch Supervisor in 2018.

In his new position, Josh will be responsible for managing the daily

operations of our Portville Branch location, staff supervision and acting as the primary business development officer in our new service areas. He will also be participating in various professional, civic and community activities, enhancing the image of the Credit Union in our current and new field of membership.

As always, we will continue to provide full-service financial products to our members at our Wayne Street, Clark Street and Allegany locations.



**Karen Newman** will take over duties as our Allegany Branch Supervisor. Originally from Bradford, PA, Karen has many years of credit union leadership experience working for various credit unions in the state of Florida. Before joining the Olean Area FCU team, Karen most recently held the position of Assistance Branch Manager at Present Sound Credit Union in Tacoma, Washington. Karen's knowledge and experience in member service and lending provides valued dimension to our leadership and service teams.



**Jessica Rogosienski** will continue her duties as our Clark Street Branch Supervisor. Jessica joined Olean Area FCU as part of our merger with Enchanted Mountains Federal Credit Union. She previously held the position of Branch Supervisor with Enchanted Mountains. Jessica attended Jamestown Community College as well as the Credit Union National Association Management School. She recently received her Certificate in Successful Supervision

through the SUNY JCC Workforce Readiness Program. Jessica's thorough understanding of financial products and dedication to our service standards ensure that she will continue to provide exceptional member service while offering experienced recommendations on products to fit specific member needs.

## Student Loans

### Our Student Choice private lending solution features:

- Zero origination or prepayment fees
- Lower interest rates
- Simple one-time online application
- Deferment of principal and interest while in school
- Flexible repayment terms
- Convenient line of credit structure



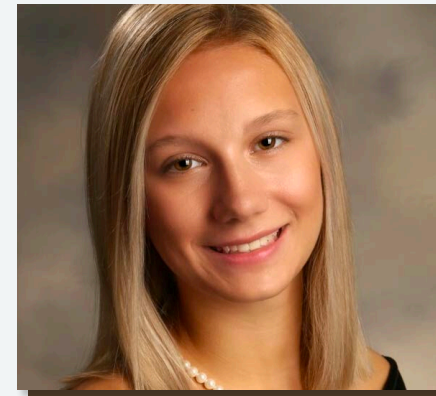
## my E-Checking Perfect for New Grads!

- Receive up to \$10 in Foreign ATM Fee Reimbursements<sup>1</sup>
- Free Debit Card<sup>2</sup>
- Free On-line Banking
- Free E-Statement
- Free E-pay
- Free MobileCU App<sup>3</sup>
- Five Checks per Month at No Cost<sup>4</sup>

1. When members have 25+ POS debit card transactions posted during the month. POS=point of sale, which is using your debit card to purchase goods (an ATM withdrawal is not POS) Reimbursement will occur on the last day of your account statement cycle. 2. There is no cost for the debit card however, foreign ATM charges may be assessed. 3. Data carrier rates may apply. 4. Limited to writing five checks per month. If you exceed this number, you will be assessed a \$.25 per check fee. Must have a Primary Share Account with a minimum \$5.00 balance. Must have a debit card, E-teller (on-line banking), and receive E-statements to open a myE-Checking account. If any one of these criteria is not maintained, you will be switched to a myBasicChecking Account. Not available to businesses, non-profits, organizations, estate, trust, rep-payee, guardianship, dedicated or NYSUTMA accounts. Must be 18 years old or have a parent or legal guardian joint on account. Subject to ChexSystems approval. No minimum balance required to open a myE-Checking account.

## CONGRATULATIONS 2021 SCHOLARSHIP WINNERS!

Olean Area FCU awarded college scholarships to three high school seniors to help finance their college education. The students, who are member of the Credit Union, were chosen based in their outstanding academic and extracurricular achievements.



**Caroline DeRose** of Olean High School was the recipient of a **\$500 Olean Area FCU Award, a \$500 Jamestown Chapter Award and a \$1,500 New York State Credit Union Association Award.** Caroline plans to attend Villanova University.



**Nathan-Michael Gabler** of Olean High School was the recipient of a **\$500 Olean Area FCU Award.** Nathan Michael plans to attend West Virginia University.



**Marina Heister** of Olean High School was the recipient of a **\$500 Olean Area FCU Award.** Marina plans to attend Niagara University.

**Outdoor FAMILY MOVIE NIGHTS**

**THE CROODS: A NEW AGE**  
FRIDAY, AUG 13<sup>TH</sup> • JCC CAMPUS LAWN - 8:30PM

**ONWARD**  
FRIDAY, AUG 27<sup>TH</sup> • PORTVILLE TOWN PARK - 8:00PM

Bring a chair and snacks and enjoy the movie on our 20ft. screen!

**MEMBER APPRECIATION DAY!**

**AUGUST 27<sup>TH</sup>  
PORTVILLE BRANCH**

**SEPTEMBER 9<sup>TH</sup>  
WAYNE STREET BRANCH**

**SEPTEMBER 16<sup>TH</sup>  
ALLEGANY BRANCH**

**SEPTEMBER 23<sup>RD</sup>  
CLARK STREET BRANCH**

**FREE LUNCH WILL BE SERVED TO MEMBERS 11AM - 3PM.**

## LOCATIONS & HOURS

### Main Office

1201 Wayne St.  
Olean, NY 14760

M-F 8:30am - 5:30pm  
Sat Drive thru 8:30am - 12pm

### North Clark St Office

206 N Clark St.  
Olean, NY 14760

M-F 8:30am - 5:30pm

### Allegany Office

180 W Main St.  
Olean, NY 14706

M-F 8:30am - 5:30pm

### Portville Office *(Open Now!)*

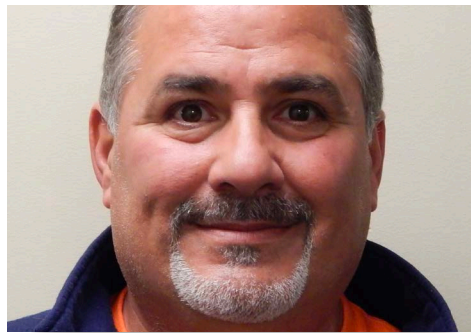
160 S Main St.  
Portville, NY 14770

M-F 8:30am - 5:30pm

## RETIREMENT ANNOUNCEMENTS



**Bonnie Gustin** has retired with over 33 years of service to the Credit Union. She began her career in October 1987 as a part-time teller. Bonnie quickly advanced in her career holding positions as Head Teller, Member Service representative, Accounting Assistant and most recently as Accounting Manager which she was appointed to in August 2020. Bonnie's knowledge, personality, and willingness to do whatever's needed will not be forgotten.



**Chuck Dwaileebe** retired after 17 years of dedication to the Credit Union. Chuck began his career in November 2003 in the maintenance department. He made it his priority to ensure the safety and comfort of each employee as well as a safe, clean and well-maintained environment for members. Chuck took great pride in assisting with activities and events that showcase the involvement of Olean Area FCU within our community. Chuck's helpfulness and generous spirit will be greatly missed by all Credit Union staff.



**Cheryl Isaman** retired from the Credit Union after 4 years of service. Cheryl joined the Credit Union team in July 2017 as a seasonal teller. Cheryl quickly added to her work schedule, providing valuable coverage to the teller line and assisting at the greeter's station. Her positive attitude and outstanding member service will be missed.



## WELCOME NEW SUPERVISORY COMMITTEE MEMBERS!

The Olean Area FCU Supervisory Committee are volunteers appointed by the Board of Directors, who work in conjunction with the Board to ensure the credit union's soundness and stability. The newly appointed members, all residents of Olean bring a background of diversified experience and commitment to the communities we

serve. **Faith Hustak** is the Head Nurse at The Pines Healthcare & Rehab Center, **Ann Lehman** is the Associate Vice President for Grants & Research/ Chief of Staff at St. Bonaventure University, and **Aimee Siperek** is the Chief Executive Officer for the Parent Education Program.